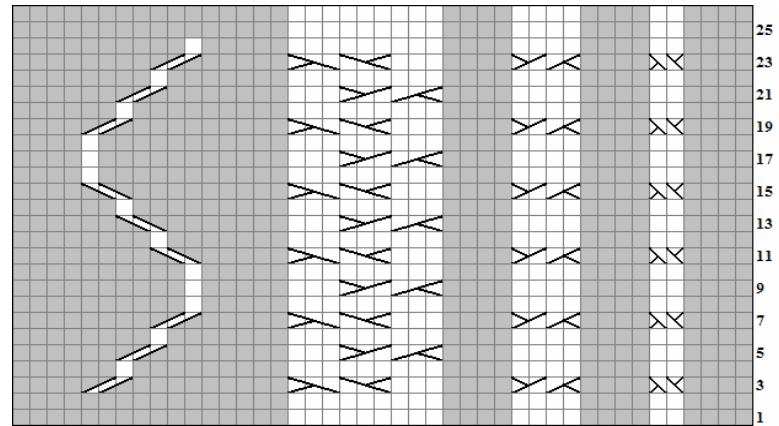
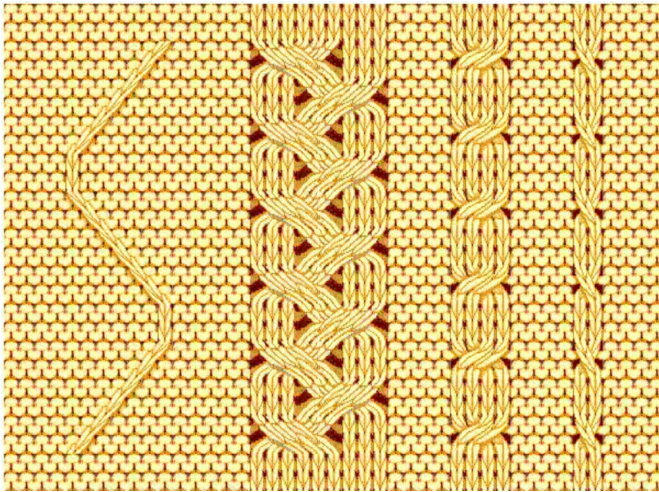


Mistake Fix Level 3 - Cable Fixes



C2B		Cable 2 Back	Slip the next stitch onto cable needle and hold behind work. Knit the next stitch from left-hand needle, knit the stitch from the cable needle.
C2F		Cable 2 Front	Slip the next stitch onto cable needle and hold in front of work. Knit the next stitch from left-hand needle, knit the stitch from the cable needle.
T3R		Twist 3 Right	Slip the next two stitches onto cable needle and hold behind work. Knit the next stitch from the left-hand needle, then purl the two stitches from the cable needle.
T3L		Twist 3 Left	Slip the next stitch onto cable needle and hold in front of work. Purl the next two stitches from the left-hand needle, then knit the stitch from the cable needle.
C4B		Cable 4 Back	Slip the next 2 stitches onto cable needle and hold behind work. Knit the next 2 stitches from the left-hand needle, knit the 2 stitches from the cable needle.
C6B		Cable 6 Back	Slip the next three stitches onto cable needle and hold behind work. Knit the next three stitches from the left-hand needle, then knit the three stitches from the cable needle.
C6F		Cable 6 Front	Slip the next three stitches onto cable needle and hold in front of work. Knit the next three stitches from the left-hand needle, then knit the three stitches from the cable needle.

Homework

Cast on 43 Stitches

Row 1: P4, K2, P4, K4, P4, K9, P16.

Row 2: K16, P9, K4, P4, K4, P2, K4.

Row 3: P4, C2F, P4, C4B, P4, K3, C6F, P9, T3R, P4.

Row 4: K6, P1, K9, P9, K4, P4, K4, P2, K4.

Row 5: P4, K2, P4, K4, P4, C6B, K3, P7, T3R, P6.

Row 6: K8, P1, K7, P9, K4, P4, K4, P2, K4.

Row 7: P4, C2B, P4, C4B, P4, K3, C6F, P5, T3R, P8.

Row 8: K10, P1, K5, P9, K4, P4, K4, P2, K4.

Row 9: P4, K2, P4, K4, P4, C6B, K3, P5, K1, P10.

Row 10: K10, P1, K5, P9, K4, P4, K4, P2, K4.

Row 11: P4, C2F, P4, C4B, P4, K3, C6F, P5, T3L, P8.

Row 12: K8, P1, K7, P9, K4, P4, K4, P2, K4.

Row 13: P4, K2, P4, K4, P4, C6B, K3, P7, T3L, P6.

Row 14: K6, P1, K9, P9, K4, P4, K4, P2, K4.

Row 15: P4, C2F, P4, C4B, P4, K3, C6B, P9, T3L, P4.

Row 16: K4, P1, K11, P9, K4, P4, K4, P2, K4.

Row 17: P4, K2, P4, K4, P4, C6B, K3, P11, K1, P4.

Row 18: K4, P1, K11, P9, K4, P4, K4, P2, K4.

Row 19: P4, C2F, P4, C4B, P4, K3, C6F, P9, T3R, P4.

Row 20: K6, P1, K9, P9, K4, P4, K4, P2, K4.

Row 21: P4, K2, P4, K4, P4, C6B, K3, P7, T3R, P6.

Row 22: K8, P1, K7, P9, K4, P4, K4, P2, K4.

Row 23: P4, C2B, P4, C4F, P4, K3, C6F, P5, T3L, P8.

Row 24: K8, P1, K7, P9, K4, P4, K4, P2, K4.

Row 25: P4, K2, P4, K4, P4, K9, P16.

Row 26: K16, P9, K4, P4, K4, P2, K4.